

ARM® DSTREAM

Debug and Trace Adapter



<http://ds.arm.com/ds-5/debug/dstream/>

The ARM® DSTREAM High-Performance Debug and Trace unit enables powerful software debug and optimization on any ARM processor-based hardware target.

With features such as accelerated hardware bring-up for many development platforms and open debug interface for use with third-party and custom tools, DSTREAM paired with DS-5 Development Studio is a comprehensive solution for development and debug of complex SoCs based on an ARM Core.

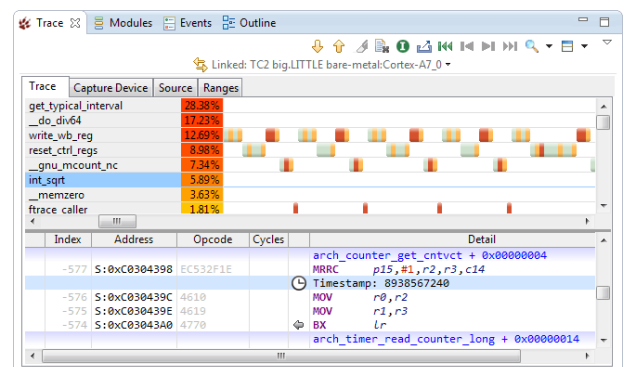
DSTREAM ships with powerful software utilities to assist with SoC bring-up and hardware validation.

A low-level RDDI connection to DSTREAM can be used to gain access to the JTAG scan-chains inside the target device. This enables the unit to be used for simple tasks such as production testing.

Features	DSTREAM
Debug & Trace <ul style="list-style-type: none"> Serial Wire Debug (SWD) JTAG CoreSight 	<ul style="list-style-type: none"> ✓ ✓ ✓
Supported ARM architecture <ul style="list-style-type: none"> ARM v4 to v8 	<ul style="list-style-type: none"> ✓
Interface Vref	1,0V - 5,0V (configurable by target)
Target Connector <ul style="list-style-type: none"> 14-pin & 20-pin 14-pin 10-pin & 20-pin 38-pin 34-pin 60-pin 	ARM JTAG TI OMAP CoreSight MICTOR MIPI MIPI via adaptor
Order Code <ul style="list-style-type: none"> DSTREAM DEBUG & TRACE UNIT DSTREAM High-Speed Serial Trace DSTREAM and HSSTP Probe Bundle 	DSTRM-KT-0181A DSTRM-KT-HSSTA BUNDS-KT-DSHSS

Debug and Trace

- 4GB trace buffer for extended trace capture
- Parallel Trace up to 9.6 Gbps
- Serial Trace up to 20 Gbps with HSST- Probe
- Download speed up to 2.5MB per second
- JTAG clock up to 60 MHZ
- Flexible architecture to support 3rd party



Trace visualization displays instructions executed, or a representation of memory accesses, branch instructions and other instructions....

Related Products

- ARM® DS-5 Development Studio
- ARM® DS-5 Development Studio Vendor Edition

All brands names or product names are property of their respective holders. Neither the whole nor any part of the information contained in, or the product described in this document may be adapted or reproduced in any material form expect with the prior written permission of the copyright holder. The product described in this document is subject to continues development and improvements. All particulars of the product and its use contained in this document are given in good faith. All warranties implied or expressed including but not limiting to implied warranties of satisfactory quality or fitness for purpose are excluded. This document is intended only to provide information to the reader about the product. To the extent permitted by local laws ARM shall not be liable for any loss or damage arising from the use of any information or any error or omission in such information.

www.arm.com

